

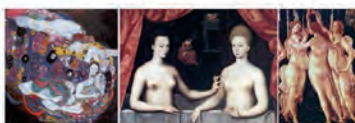
PROSCENIUM ARCH



Above and below: some of the interior design concepts considered for 'New York New York'.

Theatre and interior design concepts created by Cirque du Soleil®

The theme of Theatre Engineering and Architecture was examined by Don MacLean of Cirque du Soleil in his Keynote Address. Having examined various aspects of the engineering of Cirque's venues, here he examines the development of the venue for the show 'Zumanity'



FLOOR PROJECTIONS AND ANAMORPHOSIS



above. The staircase leading to the rear stalls will arrive at an upper lobby six feet (2 metres) above the main lobby. On this level there will be a small bar at the back of house, and an elevated performance stage for use before or during the show. This is another example of having to accommodate the impositions of an existing building. The performance stage will, in fact, be the roof of the main command center for the hotel's fire prevention and protection systems. As it was totally impossible to move all those systems, we're now making a stage, rather than a silk purse, from a sow's ear!

The second grand staircase in the lobby will lead directly to the balcony, 22 feet (6.7 metres) up. Under this staircase will be hidden a small performance area, or a 'happening stage', which will be a reward for those patrons curious enough to fully explore the lobby environment prior to curtain up. On the balcony level, there will be a second bar area which, like all the bars in the theater, will remain open for service throughout the show. For Cirque, this is a departure to incorporate bars into the performance space, but they are intended to encourage the guests, once again, to interact with the environment during the performance.

Back downstairs in the lobby, the walls themselves will be made of a translucent material, perhaps fiberglass if we can meet Building Code, or resins. These walls will be backlit to allow for shifting, colored lighting patterns that will help create a sense of movement within a relatively small space. The carpet will also have a texture and texture design that echoes the fluid lines of the ceiling suspended above. This ceiling will be created by an undulating sculptural form, using translucent resins which are suspended from the balcony slab above. Its design will be intended to evoke an image of strained muscle tissue, or of flowing water. You can understand that the original concept for this design was to be "under the petticoats". This sculptural form will be used as a projection surface from both above and below. It will have openings and varying capacities to function as a giant gobo when lit from above, creating patterns on the floor which, with moving lights, will also be able to move. The reality is we also need to accommodate the required sprinklers, audio lines and other building mechanical services in that space. The fluctuations in height in the ceiling are also meant to